


Habitat Institute



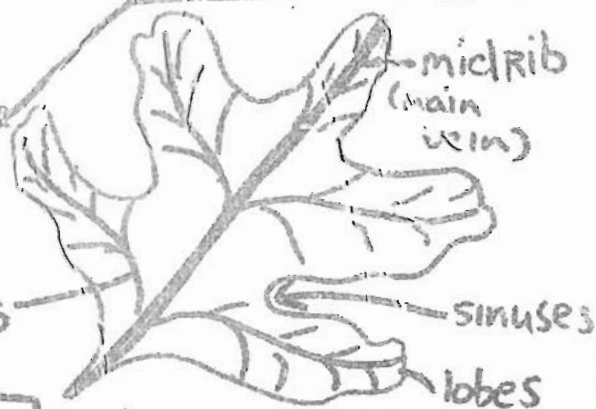
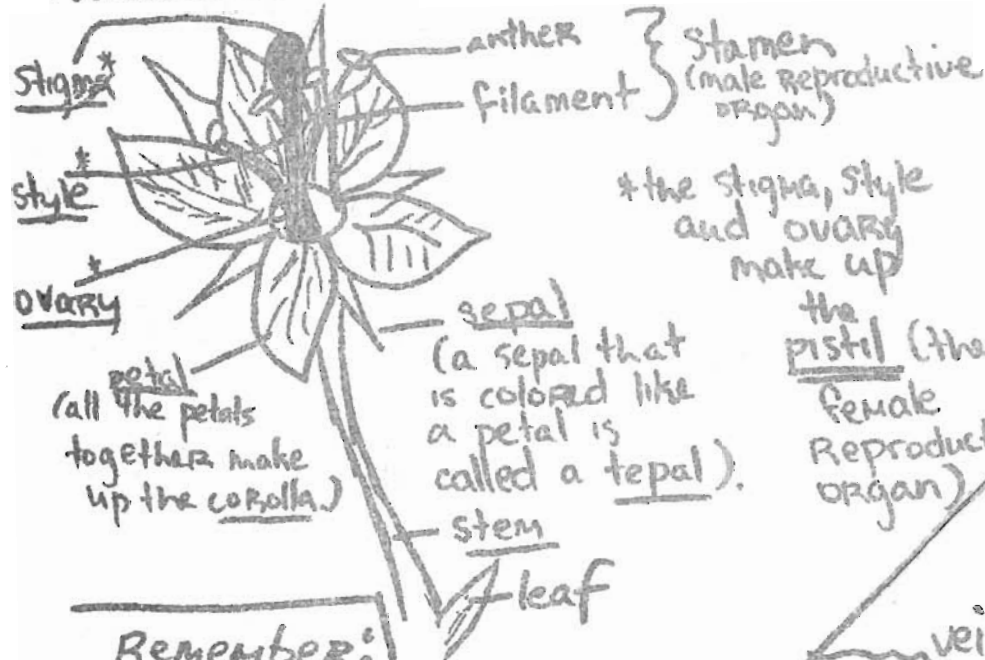
Times: 8:30 am - 3:00 pm
 Leave from: Newton South
 Leaders: Stacy (965-4988)
 and Molly (965-1979)

equipment: Bike, bike helmet,
 sneakers - NO BOOTS,
 2 water bottles, lunch,
 field kit, \$ for ICE-CREAM 

Stacy's trip slip # 9
 July 16, 1992

The Habitat Institute is a 26-acre Nature Sanctuary located in Belmont. We will be biking over the Belmont Hills, which will be difficult. At the Habitat Institute we will see various flowers and trees. There are also birds at the Institute.

Parts of a Flower



Remember:

Bike Safety

① Ride on the right side of the road

② Use hand signals:



③ stay spaced out

TRIP SLIP #111

17 July 1991

Rachel 352-5932

Molly 965-1979

Times: 8:30 AM to 3:00 PM

Equipment: Bicycle Field Kit
Helmet Extra Water
Money for ICE CREAM!

Habitat Institute



There are over 195,000 species of flowering plants

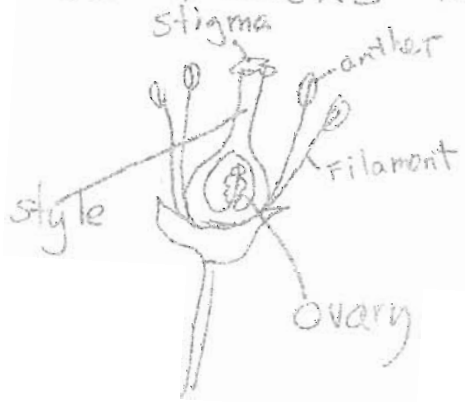
Sepals are the protective leaf-like structures around the "corolla" (THE PETALS).

The HABITAT INSTITUTE trip is very HILLY, so get lots of sleep tonight!! The area is beautiful and encompasses a pond, a field, woods and a garden. There are also (I believe) some thought-provoking sculptures amongst the trees.

We'll examine the ground cover, understorey, and canopy of the forest, and talk about the differences in their respective communities.

How DO FLOWERS REPRODUCE?

What does the very become in certain plants??



anther + filament = stamen

stigma + style + ovary = pistil

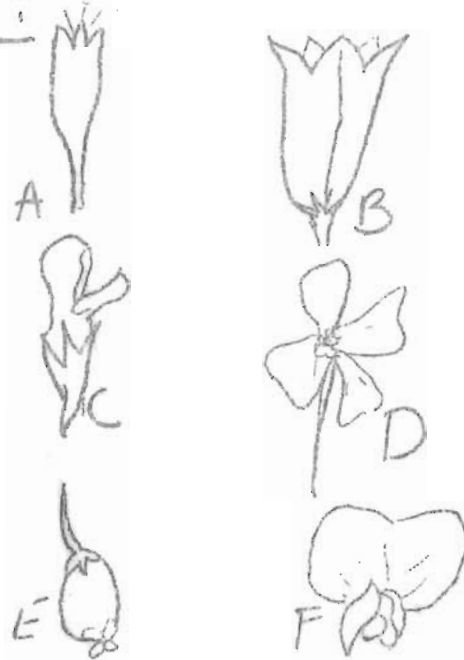
FORM 1001
~~PERMITTED~~ Permitted Trip

To: _____
Date: July 17, 1991

I give my son/daughter _____, permission to bicycle to
the above locale under the supervision of the Environmental Studies
program. I understand that this permission slip is for this trip only. I
understand that my child can only participate on this trip if this slip is

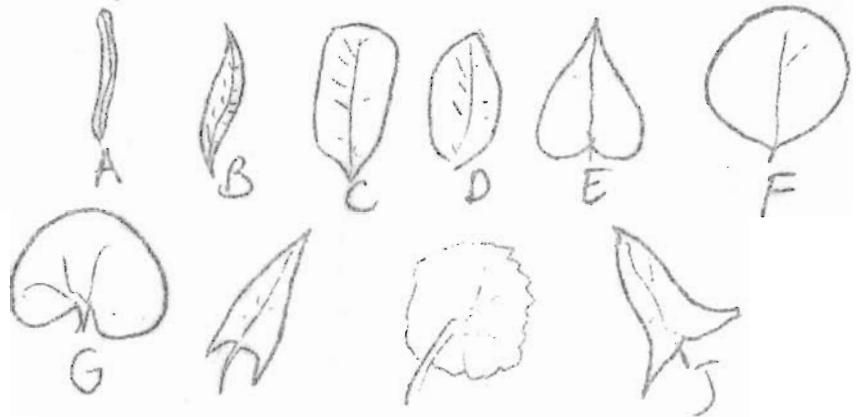
⑤ What is its shape?

- A) TRUMPET
- B) BELL
- C) 2-Lipped
- D) CROSS-SHAPED
- E) BARREL-SHAPED
- F) BUTTERFLY-SHAPED



⑥ What is the shape of the leaf?

- A ribbon-shaped
- B lance-shaped
- C oblong
- D oval
- E heart-shaped
- F rounded
- G kidney-shaped
- H arrow-shaped
- I shield-shaped
- J halberd-shaped



Are the edges wavy? serrated? Jagged?

Are the leaves lobed? Veined? Cleft?

Stigma + style + ovary = Pistil
Anther + Filament = stamen



STARTING: 1:30pm for the early time
 END: 3:00 PM
 LEADERS: Me + Stacy (905-4988)


Molly Smith, (905-1979)
 TRIPSLIP #9
 July 16th, 1992

HABITAT INSTITUTE

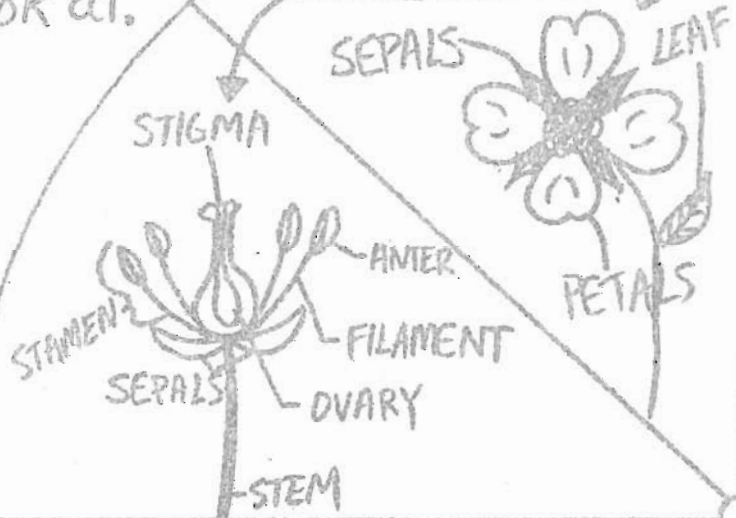
Equipment: BIKE, HELMET, field kit, lots of water (H₂O)

Habitat is a hilly bike trip, so be prepared for a tough ride. The Institute is a beautiful conservation area with many plants and trees to look at.

Also bring money for ice cream



PARTS OF A FLOWER:



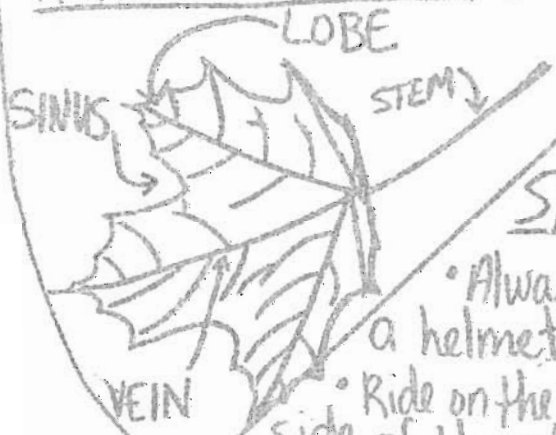
CAN YOU DESCRIBE THE TYPES OF TREES AND PLANTS IN THESE PARTS OF A FOREST?

- 1) CANOPY
- 2) UNDERSTORY
- 3) GROUND COVER

IMPORTANT FACTS TO KNOW:

- 5 minute showers use 21-26 gallons of water less than 26 baths do.
- A leaky faucet can waste up to 4 000 gallons of H₂O a day.
- Installing water saving shower heads save up to 40 gallons each 40-min shower.

PARTS OF A LEAF:



BIKE SAFETY:

- Always wear a helmet!
- Ride on the RIGHT side of the street.
- NEVER go through red lights; follow traffic rules.

DO YOU REMEMBER YOUR HAND SIGNALS?



RIGHT



LEFT



STOP

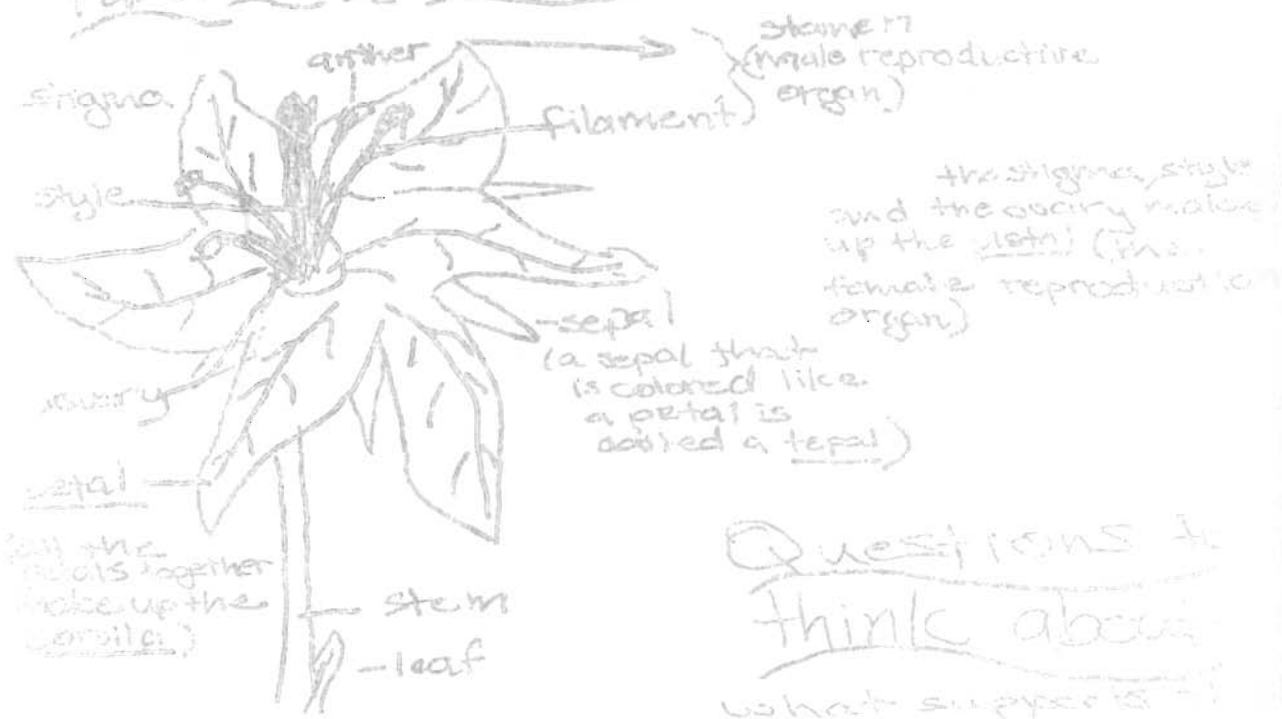
*#sorry, not much drawing talent!

HABITAT INSTITUTE

Trips to
(969-7407) Pogonia area
(969-1979)

This is a hilly bike trip. Be ready for a tough ride. The Institute is a very beautiful area. It has many plants and trees and other that we can learn about.

Parts of a flower



Questions to think about

What supports a leaf?

What is the job of a leaf?

What is the job of a flower?

Parts of the forest

- canopy
- understory
- ground cover

nt: 2000

10 10 3 4 10 14

Date: 19 July 95

Time: 8³⁰am - 3pm

Leaders: Don Thomas
(527-2765)

Peter Montague
(969-4196)

Equipment: A Bike, Field Kit,
Two canteens of fluids,
Sneakers, \$ Honey for
Ice Cream ~~you!~~

HABITAT INSTITUTE



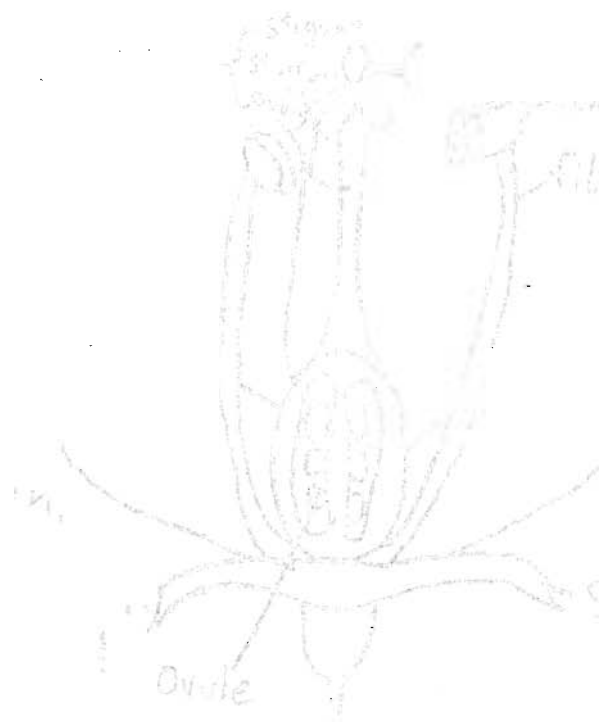
Habitat Institute is not
a very big bike &
it is quite ~~different~~
I did ~~do~~ our last year
trip ~~to~~ But this is

thing beca
ek.  Jean!

Habitat Institute is a

Do you know what make
a tree a tree?

Or a flower a flower? Why don't we look at one.




START: 8:30 AM **note early time
 END: 3:00 PM
 LEADERS: Me + Stacy (905-4988)

Molly Smith (905-1979)
 TRIPSLIP #9
 July 16th, 1992

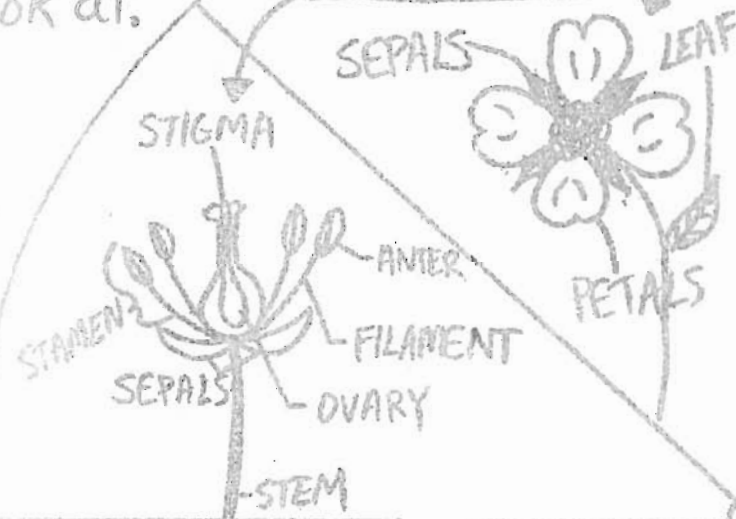
HABITAT INSTITUTE

Equipment: BIKE, HELMET, field kit, lots of water (H₂O)

Habitat is a hilly bike trip, so be prepared for a tough ride. The Institute is a beautiful conservation area with many plants and trees to look at.

Also bring money for ice cream 

PARTS OF A FLOWER:



CAN YOU DESCRIBE THE TYPES OF TREES AND PLANTS IN THESE PARTS OF A FOREST?

- 1) CANOPY
- 2) UNDERSTORY
- 3) GROUND COVER

IMPORTANT FACTS TO KNOW:

- 5 minute showers use 21-26 gallons of water less than 20 baths do.
- A leaky faucet can waste up to 4,000 gallons of H₂O a day.
- Installing water saving shower heads save up to 40 gallons each 40-min shower.

PARTS OF A LEAF:



BIKE SAFETY:

- Always wear a helmet!
- Ride on the RIGHT side of the street.
- NEVER go through red lights; follow traffic rules.

DO YOU REMEMBER YOUR HAND SIGNALS?




RIGHT
 LEFT
 STOP
 #sorry, not much drawing talent!

Habitat Institute

Stacy's trip slip #9
July 16, 1992

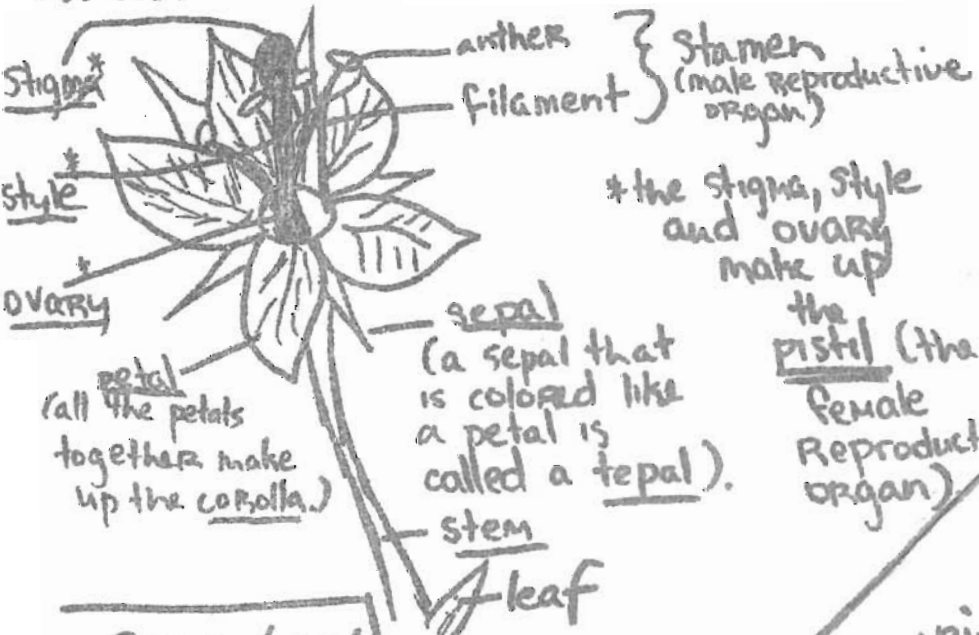


Times: 8:30 am - 3:00 pm
Leave from: Newton South
Leaders: Stacy (965-4988)
and Molly (965-1979)

equipment: Bike, bike helmet,
sneakers - NO BOOTS,
2 water bottles, lunch,
field kit, \$ for ice-cream 

The Habitat Institute is a 26-acre Nature Sanctuary located in Belmont. We will be biking over the Belmont Hills, which will be difficult. At the Habitat Institute we will see various flowers and trees. There are also birds at the institute.

Parts of a Flower



Remember:

Bike Safety

① Ride on the right side of the road

② Use hand signals:  to turn right  to stop  to turn left

③ stay spaced out

TRIPSLIP #12

18 July 1990

Leaders: Rachel

(332-7372)

-and-

Cole

(964-5857)

HABITAT INSTITUTE

Times: 8:30
to
3 PM

EQUIPMENT: Field kit, sneakers, BICYCLE, bicycle helmet (if you don't have one, call us - we'll procure one for you), WATER, \$ for ice cream

There are 195,000 species of flowering plants

Today we will be focusing on flower identification. We will also be doing a lot of biking. The regular rules apply - use signals, stay to the right of the road, and only cross the street with a leader. Also make sure you have a decent amount of space between you and adjacent bikers.

- 1) How are the "flowers" arranged? Are they attached to a single stem, does each have a distinct stalk, are they clustered?
- 2) How is the perianth (petals & sepals) arranged? Do the petals (the "corolla") have the same size and shape (is it regular or irregular)? Are the petals joined or free from each other? What is the form or shape of the corolla?

3) How many parts does the flower have?

Are there 3 sepals, 3 petals, 3 stamens? Then it's a MONOCOT.

Are there multiples of 4 or 5 petals, stamens or sepals? Then it's a DICOT.

SEPALS are the protective leaf-like structures around the corolla.



4) What color is it?

HABITAT INSTITUTE

Trip slip # ?
July 14, 1997
Times: 8³⁰ - 3

Leaders:
Sarah Northrup
965-4602
Pete Montague
969-4196



Equipment

Field kit, Lunch,
water, bike,
A HELMET, sneakers
Other things that you
might like to have: bike
tools (if you have them)
and want to bring them)
and \$ for ice cream
(just in case we stop on
the way home - I'm not
saying we will, but it
has happened)

I'm sure you are wondering
what The Habitat Institute is...
well I'll tell you! It is an
estate in Belmont that was
designed to show many different
habitats. We will explore around
and see what we can find.
Some of the habitats we will
(hopefully) get to see are, pond,
meadow, and pine forest. There
is also a wild flower garden
which I am very excited to
see (Since I am wild flower-girl)

Important:

It is very important
that we follow bike
safety since we will
be biking all day and
don't want anyone to
get hurt.

Here are the basics:

1. Always use hand
signals (we will review
in the morning)

2. Stay single file,

this means NO
PASSING!!!

3. Some people are
slower than others
be nice about it (I will
be one of those slow
ones, it's just how I bike)

4. Don't forget! We're
going to have fun,
so come with a smile
and a good attitude

Directions to Habitat

Down Walnut to Water town St. ^(Left)
take this Naantom until you
reach Galen St (big intersection
Bus tracks running down the middle)
take a left which will bring you
into Water town Sq. go straight
(on to Mt Auburn (maybe)) You will

pass a Dunkin Donuts on the right
at the second set of light take
a Left

cemetery

church

there will be
a school on
either side after
the cemetery church

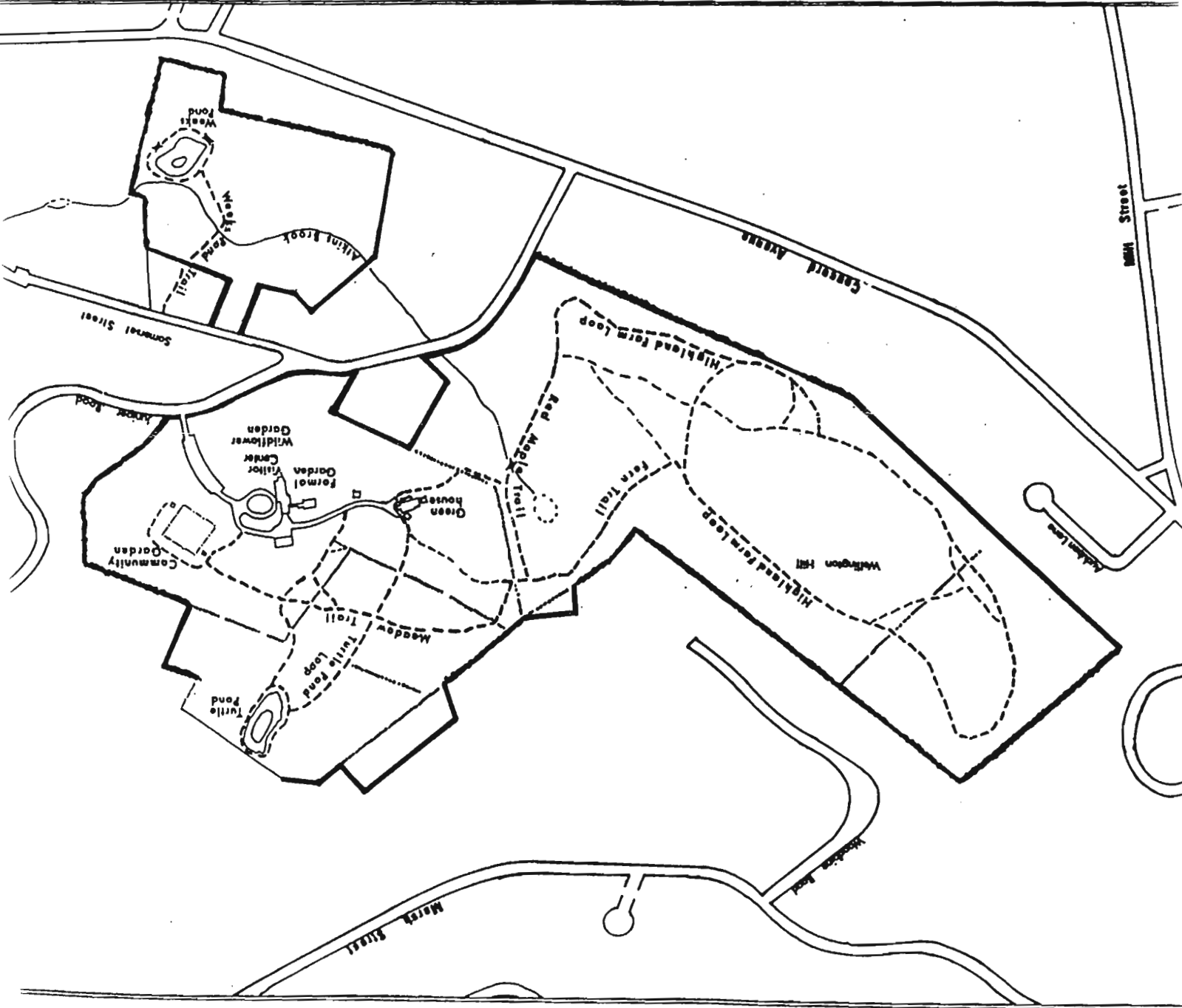
bear right you will go up and

over a big hill then thru Cushing Square
(lots of stores & a set of lights) bear
Straight (true straight is a little street)



Habitat Ed. Center and Wildlife Sanctuary

Legend	
	1. trails
	2. topographical lines
	3. boundary lines
	4. stone walls that form boundaries
	5. stone walls within boundaries
	6. foot bridge
	7. fence



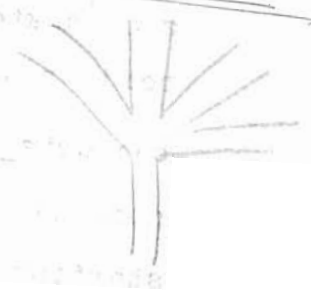
redo tomorrow morning

→ Nonantum
@ intersection (HUB) - take (L) → Watertown Sq.
~ straight (Rt 16)

1st (L) @ lights

pass D. donuts.
(church on (L)
Clementary on (R))

SCHOOL on your left / right
TAKE A RIGHT OVER HILL



→ Cushing Square. → lights
GO STRAIGHT

(cross trapelo Rd → COMMON ST.)
~ 5mi

→ BELMONT CENTER

(take (L) under a
railroad bridge)

→ go thru set of lights
→ up hill

HABITAT ~ 1/2 way up hill on (L).

w

ENVIRONMENTAL SCIENCE PROGRAM

1 9 9 6

Trip Slip #11
July 17, 1996

8:30am to 3^{pm}pm

Meet at:

Newton South

Your Leaders

Dan P.
964-1313
Dan T.
527-2763

Equipment List

- Field Kit
- A large lunch
- Lots of water (*at least 2qts*)
(*Optional: a sugary drink for that quick burst of energy*)
- **A safe, working bike** (preferably 10-speed or better - you're gonna need it with all the hills on this trip!)
- Bike tools (if you have them)
- **A Helmet!** (REQUIRED)
- Sneakers (*no boots!*)
- Shorts (or weather appropriate clothing)
- **OPTIONAL:**
 - \$\$\$ for Ice Cream (if we stop on the way back)
 - Spare bike parts (i.e. inner tubes, etc)

HABITAT INSTITUTE

What is the Habitat Institute?

The Habitat Institute is a 26-acre Nature Sanctuary located in Belmont. To get there, we will be biking over the Belmont Hills, which, unfortunately, will *not* be easy. Once we arrive at the Institute, we will see various flowers, trees, and birds that are there. This is a very hilly trip, so be sure to get a good night's sleep the night before!

What will we do there?

We will spend lots of time identifying the various flowers and trees that are there. What are some of the things we look for when identifying plants and flowers? Here are some hints:

- √ Color
- √ Size
- √ Shape
- √ Arrangement of petals and sepals
- √ Arrangement of flowers
- √ Number of parts

Bike safety information...

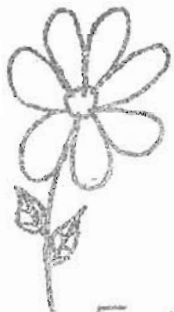
Since this is a bike trip, special rules apply. We *always* use our hand signals (we will go over them in the morning), and we always bike single file along the right side of the road. There will be **no passing**, and everyone will have their chance to lead the group. Don't rush things, it is better to get there safe than sorry. Remember, *some people are slower bikers than others!*

Things to think about...

There are over 195,000 species of flowering plants.
What are the different parts of the flower?
How do flowers reproduce?
How do birds reproduce?

Times - 8:30am to
 Meet at - Newton South
 Other Leader - Agatha (969-7407)

Molly Smith 965-1979
 Trip slip #13
 July 19, 1993



HABITAT INSTITUTE



Equipment: A bike with gears, 2 bottles of water, lunch, field kit, bike helmet, any bike tools you have. Also, sneakers and money for ice cream.

FLOWERS, FLOWERS, FLOWERS

- What is the purpose of the flower on a plant?
- What are the reproductive organs of a flower?
- What is the purpose of the sepals? are the sepals?
- What is the function of the stem?
- How do flowers attract bees?
- When did flowers first evolve?

The Habitat Institute is a nature sanctuary located in Belmont. That means we have to bike up the Belmont Hills. It also means we get to coast down them, YEA! The Institute is 26 acres and full of flowers and wildlife. My favorite part is the turtle pond. Habitat is also a place where we can see a variety of environments. Along with the pond we will see a field environment, a forest and many gardens. Maybe we'll be lucky enough to see some birds!

LEAVES, LEAVES, LEAVES

- How do we use leaves to identify trees?
- Why are leaves important to trees?
- Why do leaves lose their color in Autumn?



Habitat Institute

Trip slip #11, Habitat Institute

Leaders: Dan Thomases (527-2763)

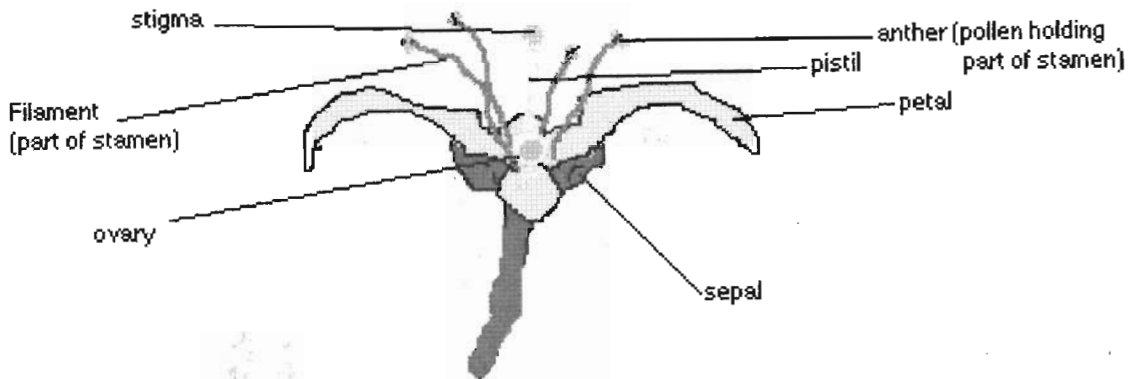
Dan Polivy (964-1313)

Date: Wednesday, 17 July 1996

Time: 9:00am-~~3~~pm 2:00pm

Equipment: Lunch, Water, Raingear, Bicycle, Helmet, Money for Ice Cream and Field Kit.

Today we will bike off to Habitat Institute in Belmont. It is primarily a flower research center with a nice garden to look through. It will be a hilly bike ride but don't worry it's not very far and we can stop plenty of times. Do you know the parts of the flower? I'm sure you know about the petals and pollen but do you know about the anther, the filament, the pistil and the ovary?



I know you know what the difference is between a monocot and a dicot, but as far as flowers go: Monocot flowers have petals which come in threes and sixes and dicot flowers parts and petals come in fours and fives. Did you know that there are over 100 families of wild flowers and more than 15,000 species of them.

Can you name any kind of:

Woodland Flowers:

Mountain Flowers:

Water Flowers:

Roadside Flowers:

End: 3:00 PM
 Leave from: Newton South
 Leaders: met Rachel

your permit slips

Tripolio #12
 Wednesday July 17, 19

HABITAT INSTITUTE

Equipment: BIKE, SNEAKERS, HELMET, WATER, LUNCH, Field Kit
 If you don't have a helmet, call one of your leaders.
 Bring \$ for ice cream. No Boots.

Bicycle Safety

- Right Turn, Left Turn, STOP
- TURN SIGNALS
- Ride On The Right Side
- Stay Spaced Out
- Be Courteous To Other Riders

The Habitat Institute is a Nature Sanctuary that spans a 20 acre area. It is located in Belmont so we have to bike through the Belmont Hills, a tough trip. We will see lots of flowers and gorgeous trees and wildlife. There also is lots of modern art sculptures scattered throughout the institute.



LEAVES

There are little pores that allow H₂O to leave the leaf.

LEAVES

LOBES

VENA

veins (branching)

The Sun's energy enters the plant through the leaves

What are serrated edges?

What is the purpose of the flower on a plant?

What are the reproductive organs of a flower?

LEAVES (The other make up the vascular system)

SEPAL

(All the sepals together make up the calyx)

STEM

side of leaf